




THE UNIVERSITY PARISH OF CHRIST SUN OF JUSTICE

2125 Burdett Avenue, Troy, NY 12180
518-274-7793
www.chapelandculturalcenter.net

8 MAY
2022:

Fourth Sunday of
Easter

Find us on 

RESIDENT CATHOLIC CHAPLAIN

Fr. Larry Rice, CSP
518-276-6517
chaplain@rpi.edu

PASTOR

Fr. Tom Morrette, Pastor
Fr. Nathaniel Resila, Parochial Vicar
518-273-7602
ParishOffice@olvols.org

MASS INTENTIONS

Sunday, May 8
10AM – In memory of David Orlep by Brian and Karen Davis

Sunday, May 15
10AM – In memory of Tom Tilston by Ora Schongar

C+CC NEWS

UPCOMING CONCERTS:

Mother's Day Piano Recital
Sunday May 8, 2pm

NOTES

THANK YOU to all those who participated in the preparation and distribution of the student care packages that were given out last weekend. Your collective efforts were much appreciated!

MASKS must continue to be worn and social distance maintained at the C+CC given the current guidelines in place at RPI. If you are not fully vaccinated, you must also fill out a *Health Survey*.

WELCOME PICNIC - Mark your calendars for attending the picnic on Sunday, September 4th following the 5 PM Mass. There will be food, entertainment, and games with great prizes!

C+CC CLOSURES

The C+CC will be closed but open for Daily Mass at 5 pm only on the following dates:

Thursday, May 12, 2022
Wednesday, May 18, 2022
Monday, May 30, 2022
Tuesday, May 31, 2022
Monday, June 20, 2022

MASS/LITURGY SCHEDULE

DAILY MASS

MON. - THUR. 5 PM

WEEKEND MASS

SUNDAY 10 AM ([livestream](#)) & 5 PM

Fr. Larry is evaluating the feedback he has gotten this week about the change in the Mass schedule. He would like just a few weeks to see how it goes, and to give more people a chance to give him more direct feedback; then we can re-evaluate. One issue during the summer would be getting priest coverage on Saturdays since every parish seems to have a Saturday vigil Mass. He is hoping we can come up with a summer schedule that accommodates most people's schedules.

CONFESSION - The Sacrament of Reconciliation is available by appointment with Fr. Larry at chaplain@rpi.edu.

MINISTRY OPPORTUNITIES

Romans 12:6 "In his grace, God has given us different gifts for doing certain things well."

CATHOLIC CHARITIES MONDAY, MAY 16

Drive through food distribution at the Lansingburgh Boys & Girls Club, 501 Fourth Avenue, Troy. Volunteer and food pick up info in next week's bulletin. Want to ride together to volunteer? Contact [Christine](#) or by text: 724-316-6664.

EVENTS OF INTEREST

THURSDAY, MAY 19

10:30-3:30 Red Cross Blood drive at the C+CC.
[Register here.](#)

THURSDAY, MAY 19

7pm Pastoral Council [Zoom](#) meeting. Link forthcoming.



COLLECTIONS

Your continued generosity is appreciated!
Here are ways to give...

- **PERSONAL CARE PRODUCTS** – During the month of May we will be collecting items for the Catholic Charities Personal Care Closet. Bring your contributions anytime during May. If you would prefer to make a monetary donation, please make your check payable to Christ Sun of Justice and put personal care closet on the memo line. The following items are most needed:

laundry detergent
feminine hygiene products
household cleaning products
dish soap
soap and shampoo
deodorant and shaving items

- Mail your collection envelope and/or your check **made payable to Christ Sun of Justice** or place in the collection basket.
- Make an **online donation** (“Mass donation” in the comments section.)
- St. James School, Kalk Bay, South Africa – ongoing collection can be placed in the treasure chest in the C+CC entryway.
- This week at Mass there will be a food collection for our community – monetary donations payable to Unity House or Bethany Center OR donate non-perishable food items for the OLS Food Pantry. The greatest need for the month of May is listed below. Thank you in advance for being as generous as your means allow:

Kleenex Tissues *Canola Oil*
Spaghetti Sauce *Ritz or Saltines*
Diapers size 4 & 5 *Conditioner*
Band-Aids *Women’s XL Depends*
Deodorant Men/Women

- **Eastern European Collection** (May 22, 2022) Your support helps the church minister in parishes, provide Catholic schools and offer religious education. It also helps to preserve the sacred shrines. Please make **checks payable to Christ Sun of Justice with “Diocesan Collection” on the memo line** of your check

A FAMILY PERSPECTIVE by Bud Ozar

Today’s gospel reminds us to be shepherds for our children who depend on us to be their guides and role models. Where are we leading them? When they “hear our voice” what message do they hear?

READINGS FOR THE WEEK

Sunday [Acts 13:14, 43-52, Ps 100:1-2, 3, 5, Rev 7:9, 14b-17, Jn 10:27-30](#)

Monday [Acts 11:1-18, Ps 42:2-3; 43:3, 4, Jn 10:1-10](#)

Tuesday [Acts 11:19-26, 87:1b-3, 4-5, 6-7, Jn 10:22-30](#)

Wednesday [Acts 12:24–13:5a, Ps 67:2-3, 5, 6 and 8, Jn 12:44-50](#)

Thursday [Acts 13:13-25, Ps 89:2-3, 21-22, 25 and 27, Jn 13:16-20](#)

Friday [Acts 13:26-33, Ps 2:6-7, 8-9, 10-11ab, Jn 14:1-6](#)

Saturday [Acts 1:15-17, 20-26, Ps 113:1-2, 3-4, 5-6, 7-8, Jn 15:9-17](#)

Sunday [Acts 14:21-27, Ps 145:8-9, 10-11, 12-13, Rev 21:1-5a, Jn 13:31-33a, 34-35](#)

Rooted in History



Coronation of the Virgin Mary Sculpture

This 15th-century oak sculpture depicts Jesus on the right and Mary (kneeling in the center) being crowned by God (on the left) as the Queen of Heaven for having been chosen by God for the divine motherhood.

The statue was a gift in 1970 from Robert Petricca '66 who was an RNF Board member from 1969-2016 (currently emeritus), and who received the Sun & Balance Award in 1984. It is currently located in the C+CC lounge.

CONTACTS

Fr. Larry Rice, CSP
Resident Catholic Chaplain
10 Tom Phelan Place, Troy
chaplain@rpi.edu

Tracy Watson
Associate Catholic Chaplain
spiritual.advisorCCC@gmail.com
518-274-7793 ext. 11 or
518-233-4514

Chaplains' Office:
Mary Holbriter
Office Manager
518-276-6518
holbrm@rpi.edu

Monica Rokjer
Administrative Assistant
518-276-6517
rokjem@rpi.edu

Barbara Musial
Director of Music
musiab@sage.edu

Kevin Krolik
Director of C+CC
krolik2@rpi.edu
518-274-7793
Office Hours 9am – 5pm

Parish Trustees:
Mary Crangle Nagy
cranglemary@gmail.com

Tom Reale
realet@gmail.com



~Campus Connection~



FR. LARRY RICE, CSP

Father Larry Rice may be contacted at chaplain@rpi.edu.

Welcome to the new parish.

Well, honestly, it is not really a "new" parish. Christ Sun of Justice has been here for decades, serving the RPI community and forming a spiritual home for a welcoming, mission-driven community. There is a long and storied history, and so much to be proud of.

And yet, "under the hood" there have been some significant changes, most of them driven by external factors. The pandemic has certainly put us all through too many unwanted changes. The shortage of clergy in the diocese became a major crisis. My arrival as chaplain helped resolve much of that crisis, but also introduced some new wrinkles.

When the Diocese of Albany mandated that the parish be separated from the Rensselaer Newman Foundation, a whole host of questions were raised, some of which are not yet clearly resolved. We had to get the parish incorporated in New York State. We had to file for tax-exempt status. We had to establish bank accounts. New accounting software had to be set up. And the funds being held for us by Our Lady of Victory need to be retrieved and accounted for.

We are still sorting through issues of who pays for what. For example, because both the parish and the other users of the Chapel + Cultural Center enjoy the Christmas and Easter flowers, we decided that the parish and the foundation would split that expense.

Even the question of the parish mailing address was not simple. Some mail arrives at the Chapel + Cultural Center, some at the offices in the Rensselaer Union, and some come to my residential address. It does not help that the postal service often makes their own decisions, regardless of the address on the envelope!

Another complication: our staff works for both the parish and the foundation. This complicates our payroll and administrative processes.

Through all this sometimes-chaotic transition, the staff and parish leadership have worked tirelessly to keep the parish functioning, and to move us toward better transparency and accountability. As each of these issues gets resolved, we can move our focus more to the mission of the parish, the foundation, and the C+CC in ways that are complementary and more efficient.

As always, if you have questions or concerns about any of these things, please speak to me, the parish leadership and trustees, or our staff. Sometimes we may have to say, "we don't know yet," or "we're working on that." We are all grateful for your support, your faithfulness, and your patience!



SPIRITUAL SEEDS

By Tracy Watson, RPI Associate Catholic Chaplain

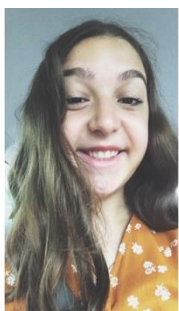
spiritual.advisorCCC@gmail.com

Dear CSJ parishioners,

“Thank you so much!” “That was AWESOME!” “I needed this!” are just a few of the comments our students have shared with me and Father Larry about being prayed for by their university parish family during Baccalaureate Mass in late April and the “blessing of brains” last weekend.

Similar sentiments of gratitude were shared as our students received their “final exam care packages” containing, amongst other things, freshly baked chocolate chip cookies and brownies, courtesy of our CSJ bakers (thank you!!!).

Thank you all who gave a helping hand in putting the bags of goodies together, especially Christine Relyea for her awesome ideas and organizational wizardry: know you are appreciated beyond words. And in the words of an Irish blessing “May your blessings outnumber the shamrocks that grow and may trouble avoid you wherever you go.” Amen.



NEWMAN CATHOLIC FELLOWSHIP

By Megan Adam *adamm2@rpi.edu*

Packing up and moving out from Troy this past week has been bittersweet for me. I was excited to be finished with my semester courses and be reunited with family and friends, but also knew I would miss the RPI community, especially the CSJ parish. Shuffling through my music while loading up bins, I came across a song that made something click inside me. Cochren & Co’s “Church (Take Me Back)” reminded me of the tremendous impact that attending mass has had on my life. I grew up in a devout, faithful household and attended Catholic school for 13 years; undoubtedly going to church has established my foundations of faith.

However, being independent for the first time in my life and attending college has allowed me to take ownership of my faith; attending mass is something I decide for myself, and something that I have grown to love even more each week. The songwriter’s testimony rings true, in that church is “more than an obligation / It’s our foundation / The family of God.” Continuing to attend mass each week while I am at home is the way I will remain connected with CSJ and all my brothers and sisters in faith. Beautifully and accurately articulated by Cochren & Co, “Oh, take me back / To the place that feels like home / To the people I can depend on / To the faith that’s in my bones / Take me back / To a preacher and a verse / Where they’ve seen me at my worst / To the love I had at first / Oh, I want to go to church.”