



# University Parish of Christ Sun of Justice

2125 Burdett Avenue, Troy, NY 12180  
(518) 274-7793  
[www.chapelandculturalcenter.net](http://www.chapelandculturalcenter.net)

September 5  
2021

23rd Sunday in  
Ordinary Time

Find us on 

## PASTOR

Fr. Tom Morrette, Pastor  
Fr. Nathaniel Resila, Parochial Vicar  
518-273-7602  
[ParishOffice@olvol.org](mailto:ParishOffice@olvol.org)

## MASS/LITURGY SCHEDULE

### DAILY MASS

MONDAY – THURSDAY 5 PM

### WEEKEND MASS

SATURDAY VIGIL 5 PM  
SUNDAY 10 AM & 5 PM

### LIVESTREAM

SUNDAY 10 AM Mass  
[www.chapelandculturalcenter.net/mass](http://www.chapelandculturalcenter.net/mass)

To view other Diocese livestreams,  
visit: [www.rcda.org/livemass](http://www.rcda.org/livemass)

## NOTES

The **Reopening Committee** met and decided we could safely maintain our current procedures so long as parishioners continue to follow the recommendation to wear a mask and socially distance in church. The Committee will continue to monitor the situation.

**Important reminder** - If you are not fully vaccinated, including children aged 2 to 12, you **MUST** wear a mask at all times in the Chapel and it must fully cover your mouth and nose. You must also fill out a **Health Survey**.

**Confession** - The Sacrament of Reconciliation is available on Saturdays, from 3:30 – 4:30 PM or by arrangement with Fr. Larry at [chaplain@rpi.edu](mailto:chaplain@rpi.edu).

**Mass Envelopes** - If you haven't requested church envelopes but want to use them, we have more available. Please contact Mary at (518) 439-5547 or [cranqulemary@gmail.com](mailto:cranqulemary@gmail.com).

**Enrollment Reminder** – Please submit your parish membership form or scan the QR code.



## EVENTS OF INTEREST

### SUNDAY, SEPTEMBER 5

- Welcome Picnic - Join us after the 5 PM Mass!
- Memorial Mass – celebrated at all Weekend Masses

### FRIDAY, SEPTEMBER 10

- American Red Cross Blood Drive at the C+CC 11:30 AM–5:30 PM. [Click here to make an appointment](#)
- 20<sup>TH</sup> Anniversary 9/11 Memorial Service 7:00 PM

**You might not know that:**

"I love going to Science Fiction conventions and have been going to them with my parents since I was about 3 months old."

**My favorite CSJ traditions:**

"I really love all of the different events that get held throughout the year from the welcome picnic to the coffee hours to the get-together after the Easter Vigil mass. They are great opportunities to meet people in the congregation and socialize with them."



Robin Kraus

WE are Church

## MINISTRY OPPORTUNITIES

*Matthew 10:8 "Freely you have received; freely give."*

**Coffee Hour** – Beginning in September, we will return to a once monthly coffee hour. The upcoming dates are the weekends of September 18-19 and October 16-17. If we have sufficient volunteers, we hope to have a coffee hour after each Mass. These are simple affairs: coffee, tea and some goodies after the morning Mass. After the 5 PM Masses, lemonade, iced tea and snacks. We need help making this happen. Please volunteer by contacting Mary Crangle Nagy at (518) 439-5547 or [cranqulemary@gmail.com](mailto:cranqulemary@gmail.com). Don't be intimidated. It's not difficult and assistance will be provided. **A SPECIAL THANK YOU** to all who are helping! It makes a difference!

**Music Ministry** - Singers and instrumentalists! All are invited to join the choir or serve as cantor, and for those who play an instrument, you are most welcome to play at any one of the Masses. Rehearsals begin Tuesday, September 7, at 7:00 PM at the C+CC. Please see Barbara Musial after Mass or call (518) 366-6381 if you have any questions.

**Welcome Picnic Game rules** - Play our "scavenger like" game at the Welcome Picnic on 9/5/21 for a chance to win a prize. Pick up the game sheet at the RPI Newman Catholic Fellowship table and complete tasks for points. Make sure you write your name and email on the game sheet. Volunteers will be at locations around the C+CC to confirm points and to assist. When you have completed tasks on both sides of the game sheet, drop the sheet into the entry box located at the Knights of Columbus table. All game sheets should be completed and put in the entry box by 7:05 PM on 9/5/21. Winners will be announced at approximately 7:15 PM. See game sheet for prize schedule and additional rules. Enjoy the picnic and have fun.

## COLLECTIONS

Your continued generosity is appreciated!  
Here are ways to give...

- Mail your collection envelope and/or your check **made payable to Christ Sun of Justice** or place in the collection basket.
- Make an online donation ("Mass donation" in the comments section.)
- Collection for Haiti - this week we are having a special collection for relief following the devastating earthquake, as requested by Bishop Scharfenberger.

## READINGS FOR THE WEEK

Sunday: Is 35:4-7a; Jas 2:1-5; Mk 7:31-37.  
Monday: Col 1:24-2:3; Lk 6:6-11.  
Tuesday: Col 2:6-15; Lk 6:12-19.  
Wednesday: Mi 5:1-4a or Rom 8:28-30;  
Mt 1:1-16, 18-23 or 1:18-23.  
Thursday: Col 3:12-17; Lk 6:27-38.  
Friday: Tm 1:1-2, 12-14; Lk 6:39-42.  
Saturday: Tm 1:15-17; Lk 6:43-49.  
Sunday: 24<sup>th</sup> Sunday in Ordinary Time: Is 50:4c-9a; Jas 2:14-18; Mk 8:27-35.



**Rooted in History** **Pie Eating Contest**  
(~1975)

## MEMORIAL MASS INTENTIONS

Please keep in your prayers those enrolled in August: Helen Howe, Pat Conte, Michael Garrigan, William Schongar and Joseph Donovan.

## MISSION STATEMENT

Empowered by the Holy Spirit, we proclaim we are God's people under the banner of The University Parish of Christ Sun of Justice. Through our words and actions, the Good News of Christ Jesus is announced here at Rensselaer Polytechnic Institute: students, staff, faculty, alumni, and local community members. As God's people on a spiritual journey, we are committed to lifelong learning, integrating faith with arts, science and technology. In addition, we endeavor to manifest justice and charity called for by our faith to make real the presence of a loving Christ, here and wherever we find ourselves.

## VISION STATEMENT

The University Parish of Christ Sun of Justice – Responding to God's love through servant leadership, a diverse welcoming community.

## C+CC NEWS

In the Gallery: Silk Horizons *by Arlene Baker*  
Arlene creates her mixed media paintings using gouache paint, paper, glue, foam core board, archival tape, household pins and many layers of see-thru silk. She uses this assemblage to create "horizons" that many people view as landscapes.

## A FAMILY PERSPECTIVE, By Bud Ozar

Because the deaf man in today's gospel recognized his disability, he could seek help from Jesus. Deafness abounds in families: in our children ("Oh dad, not that again") in parents ("It is just a stage") and in spouses ("Are you listening?"). Before Jesus can enter your home and heal, you must first recognize your deafness.

**Pediatric Brain Tumor Foundation's "Ride for Kids"** – Martin Kaiser is raising funds for the ride taking place on September 25. Go to <https://team.curethekids.org/fundraiser/3107086> to visit his ride page. Due to the COVID situation, the foundation is trying to get their accounting done early. If you have the ability to address this soon, please do. If you prefer to mail a check, made out to the PBTF, you can send it to: Martin Kaiser, 398 Moonlawn Road, Troy, NY 12180-6975. Thank you very much!





## ~Campus Connection~



### SPIRITUAL SEEDS

by Tracy Watson, RPI Associate Catholic Chaplain [spiritual.advisorCCC@gmail.com](mailto:spiritual.advisorCCC@gmail.com)

#### Intentional Living



A new month, a new school year, and soon a new season as Fall is only a few weeks away.

As you read and pray with Newman student leader Megan's reflection below, perhaps you too will take note of her **intentional** faith-based choices.

We can ask ourselves if we are making room in our day to day rhythms to spend good quality time with God in Scripture and with Christ in prayer. If not, why not? How can you be more intentional with your time? We might ask ourselves if we too are open to hear Spirit calling to us as we walk through the moments of each day. If not, what is one thing you clear away so as to become more attuned to Holy Spirit moving in your life?

**This week's Action Item:** *build in 5 more minutes to your daily prayer time. God will meet you with open arms!*

**See you at the Welcome Back Picnic!**

### COLLEGE KNIGHTS OF COLUMBUS COUNCIL #13635

by Andy Bouffard [bouffa@rpi.edu](mailto:bouffa@rpi.edu)

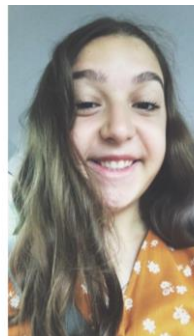


All RPI students are welcome to join the Knights and Newman Catholic Fellowship for online Rosary Knight every Wednesday at 8pm! (Email me for the Webex link).

If you are curious about the Knights of Columbus and Newman Catholic Fellowship please feel free to join the Discord at: <https://discord.gg/YxZNkDnTzV> where we chat and send announcements. Our council is currently looking for a new Financial Secretary (Financial Secretary cannot be a current RPI student). If you or anyone you know might be interested in becoming involved with the council in this role, please contact me!

### NEWMAN CATHOLIC FELLOWSHIP

by Megan Adam [adam2@rpi.edu](mailto:adam2@rpi.edu)



This week, I have felt called to share more about a daily habit that has truly changed my life throughout this year: listening along to and reflecting on the "Bible in a Year Podcast" with Fr. Mike Schmitz. Under the banner of Ascension Presents, this podcast takes its listeners throughout the entire Bible within the 365-day time frame, releasing 25-30 minute episodes each day. As someone who

often struggled to read multiple verses of the Bible at once or even know where to start, this podcast has allowed me to hear these verses in chronological order, and also understand their deeper meanings through the guided prayer and reflection offered by Fr. Mike. People all around the world have been tuning in to the podcast, which reiterates the idea that we are all one, united in God's love. Understanding the true context which the verses we often see or recite come from has allowed me to be less naive in some circumstances, but in others given me more gratitude for God's enduring faithfulness. Beyond listening to and reading God's word in this format, I have been further inspired to live out my faith, in all situations; in one of his reflections this week, Fr. Mike stated, "The people who know their God will stand firm and take action." This week, I'd like to encourage us to reflect on our relationship with God and what it means to know Him. Find the link to the podcast [here!](#)

Other news...a huge thanks to everyone who attended and helped out with our annual Welcome Picnic! This event is always so impactful and the perfect way to start off the school year. Stay tuned for more Newman Club updates as we solidify our schedule for the Fall semester.

## FR. LARRY RICE, CSP



From Fr. Larry

There are some events in our history that mark such tremendous inflection points that the mention of the date is enough to take us back to that time and provoke the memory of where we were when we first heard the news. For most of us 9/11 is one of those dates. Of course, this twentieth anniversary of that terrible historic day is a reminder that for that vast majority of Rensselaer students this day is just that: history. It happened before they were born. The changes in our society that were precipitated by the attacks of 9/11 are all they have ever known. We never did— and never will— go back to what was normal for us on 9/10/2001. And this raises the sobering question: Can we let go of what was “normal” before the COVID pandemic, and start working toward the new normal? Now is the time to decide what we want that to be, and how we want to live. One thing we will not do is forget 9/11. Please join us on the evening of September 10th at 7pm for a prayer service to remember those people— and those intangible hopes, values, and security— we lost on 9/11.



-----  
Father Larry Rice may be contacted at [chaplain@rpi.edu](mailto:chaplain@rpi.edu).

## CONTACTS

**Fr. Larry Rice, CSP**  
**Resident Catholic Chaplain**  
10 Tom Phelan Place, Troy  
[chaplain@rpi.edu](mailto:chaplain@rpi.edu)

**Chaplains' Office:**  
**Mary Holbriiter**  
Office Manager  
[holbrm@rpi.edu](mailto:holbrm@rpi.edu)  
(518) 276-6518

**Diane Waters**  
Administrative Asst.  
[waterd3@rpi.edu](mailto:waterd3@rpi.edu)  
(518) 276-6517

**Tracy Watson**  
**RPI Associate Catholic Chaplain**  
[spiritual.advisorCCC@gmail.com](mailto:spiritual.advisorCCC@gmail.com)  
(518) 274-7793 ext. 11 or (518) 233-4514

**Parish Trustees:**  
**Mary Crangle Nagy**  
[cranglemary@gmail.com](mailto:cranglemary@gmail.com)

**Tom Reale**  
[realet@gmail.com](mailto:realet@gmail.com)

**Kevin Krolik**  
**Director of C+CC**  
[krolik2@rpi.edu](mailto:krolik2@rpi.edu) (518) 274-7793  
Office Hours 9am – 5pm

**Barbara Musial**  
**Director of Music**  
[musiab@sage.edu](mailto:musiab@sage.edu)