



University Parish of Christ Sun of Justice

2125 Burdett Avenue, Troy, NY 12180
(518) 274-7793
www.chapelandculturalcenter.net

9/10 October 2021

28th Sunday in
Ordinary Time

Find us on 

RESIDENT CATHOLIC CHAPLAIN

Fr. Larry Rice, CSP
518-276-6517
chaplain@rpi.edu

PASTOR

Fr. Tom Morrette, Pastor
Fr. Nathaniel Resila, Parochial Vicar
518-273-7602
ParishOffice@olvols.org

MASS/LITURGY SCHEDULE

DAILY MASS

MONDAY – THURSDAY 5 PM

WEEKEND MASS

SATURDAY VIGIL 5 PM
SUNDAY 10 AM & 5 PM

LIVESTREAM

SUNDAY 10 AM Mass
www.chapelandculturalcenter.net/mass

To view other Diocese livestreams,
visit: www.rcda.org/livemass

MINISTRY OPPORTUNITIES

Romans 12:6 "In his grace, God has given us different gifts for doing certain things well."

Catholic Charities Food Distribution -

Thursday, Oct 28 at the Italian Community Center, 1450 5th Ave Troy. Email: volunteer@ccrcda.org. To view all Food distribution sites, click [here](#). Anyone need a ride to volunteer? Contact [Christine](#).


SPAGHETTI DINNER DESSERTS - CSJ has been asked to supply dessert for 300 meals for the annual Election Eve spaghetti dinner fundraiser at the Italian Community Center. Requested are desserts that can be bagged easily for take-out ease ex. cookies. Please drop off donated desserts to the C+CC kitchen Oct. 30-31. Stay tuned, more details on the fundraiser next weekend!

EVENTS OF INTEREST

OCT 16/17 WEEKEND – All are welcome to attend Coffee Hour following all Masses!

THURSDAY, OCT 21

American Red Cross Blood Drive at the C+CC
10:30 AM–4:30 PM. [Click here to make an appointment](#)



**Rite of Establishment:
Sept. 1967**

"(We) drove a stake into the ground ... Written on it in Chinese, Greek, Latin and Hebrew were the words "this is the center of the universe." We were establishing the base of the axis that was to extend up through the altar to the 3-dimensional cross on the roof of the chapel area. The building was to have an east-west, a north-south, AND a vertical axis reaching up to the heavens..."

(photo and excerpt by Fr. Phelan from the Sun & Balance Vol. 28 #3)

Rooted in History

NOTES

Columbus Day / Indigenous Peoples' Day - Monday, October 11th is a staff holiday. The offices in the Union and at the C+CC will be closed and there will be no daily Mass.

Please continue to wear a mask and maintain social distance. If you are not fully vaccinated, including children aged 2 to 12, you must wear a mask at all times in the Chapel that fully covers your mouth and nose. You must also fill out a **Health Survey**.

Confession - The Sacrament of Reconciliation is available on Saturdays, from 3:30 – 4:30 PM or by arrangement with Fr. Larry at chaplain@rpi.edu.

Low gluten hosts - We have low gluten hosts available for those who need them. They contain .01% gluten and are authorized for use in the Catholic Mass. If that amount of gluten still presents a problem, Fr. Larry will arrange for you to receive the consecrated wine at communion time. Please see the Mass coordinator or Fr. Larry **before** Mass to make arrangements.

COLLECTIONS

Your continued generosity is appreciated!
Here are ways to give...

- Mail your collection envelope and/or your check **made payable to Christ Sun of Justice** or place in the collection basket.
- Make an online donation ("Mass donation" in the comments section.)
- This week, Food for the Hungry Collection – monetary donations payable to Unity House or Bethany Center OR donate non-perishable food items for the OLS Food Pantry.

READINGS FOR THE WEEK

Sunday: Wis 7:7-11; Heb 4:12-13; Mk 10:17-30 or 10:17-27.
Monday: Rom 1:1-7; Lk 11:29-32.
Tuesday: Rom 1:16-25; Lk 11:37-41.
Wednesday: Rom 2:1-11; Lk 11:42-46.
Thursday: Rom 3:21-30; Lk 11:47-54.
Friday: Rom 4:1-8; Lk 12:1-7 see 657: Rom 8:22-27; Jn 15:1-8.
Saturday: Rom 4:13, 16-18; Lk 12:8-12.
Sunday: 29th Sunday in Ordinary Time: Is 53:10-11; Heb 4:14-16; Mk 10:35-45 or 10:42-45 or nos. 872-876.

You might not know that:

"In 1967 my wife Mary and I attended the ground-breaking for the C+CC. After walking in procession with a few dozen others around the perimeter of the property, we watched Tom Phelan and Fr. Bill Slavin hammer a stake into the ground. Forged into that spike was the motto "This is the Center of the Universe." Assuming the contractors were accurate in their measuring, that stake lies deep beneath the main altar to this day.

Our son John was baptized in the fountain of the newly-completed C+CC in 1968, probably one of the first of many children and a few adults to be initiated into the Christian tradition at our starkly beautiful baptistry."

Favorite C+CC memory:

"I have many memories of the C+CC — plays, dance performances, poetry readings, craft fairs, parties, schmooze fests, liturgies — but here I'll recall just one. In February 2017, Father Ed celebrated the funeral mass for Mary. A few days later he prayed over her ashes as they were being buried at the site of my parents' graves."



Michael Halloran

WE are Church

MISSION STATEMENT

Empowered by the Holy Spirit, we proclaim we are God's people under the banner of The University Parish of Christ Sun of Justice. Through our words and actions, the Good News of Christ Jesus is announced here at Rensselaer Polytechnic Institute: students, staff, faculty, alumni, and local community members. As God's people on a spiritual journey, we are committed to lifelong learning, integrating faith with arts, science and technology. In addition, we endeavor to manifest justice and charity called for by our faith to make real the presence of a loving Christ, here and wherever we find ourselves.

VISION STATEMENT

The University Parish of Christ Sun of Justice – Responding to God's love through servant leadership, a diverse welcoming community.

CSJ Enrollment Reminder –

Membership forms are available in the hallway, or email Diane and she can mail one to you. You can also scan the QR code to submit your parish membership form. Either way of enrolling is welcome!



C+CC NEWS

Coming soon to the Gallery: An exhibit of photos of past programs and performances at the C+CC.

The C+CC is seeking local artists to exhibit their works in the gallery, contact Kevin at krolik2@rpi.edu for more information.

A FAMILY PERSPECTIVE

By Bud Ozar

Having possessions is an illusion. In today's gospel Jesus told the young man to give up his need to control and put his trust in God. He couldn't let go! In families our need to control destroys relationships. We can lead, teach and encourage, but we can't control anyone but ourselves.



~Campus Connection~

SPIRITUAL SEEDS

by Tracy Watson, RPI Associate Catholic Chaplain spiritual.advisorCCC@gmail.com



Radical Hospitality through Bookmarks!

Last Sunday evening I served as lector, and as I read the Prayers of the Faithful to us who were gathered I was particularly struck by our call to pray that we “welcome the immigrant”. I couldn’t help but think of the beautiful stacks of handmade bookmarks made by our parishioners for the Border Companions project!!

Thank you to Bookmark Makers David and Jean Seaver, Christine Relyea, and Donna Crone: your expressions of hospitality are appreciated.

COLLEGE KNIGHTS OF COLUMBUS COUNCIL #13635

by Andy Bouffard bouffa@rpi.edu

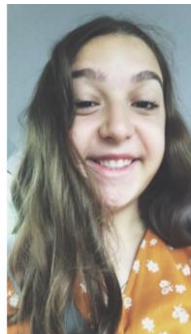


All RPI students are welcome to join the Knights and Newman Catholic Fellowship for online Rosary Knight every Wednesday at 8pm! (Email me for the Webex link).

If you are curious about the Knights of Columbus and Newman Catholic Fellowship please feel free to join the Discord at: <https://discord.gg/YxZNkDnTzV> where we chat and send announcements. Our council is currently looking for a new Financial Secretary (Financial Secretary cannot be a current RPI student). If you or anyone you know might be interested in becoming involved with the council in this role, please contact me!

NEWMAN CATHOLIC FELLOWSHIP

by Megan Adam adammm2@rpi.edu



This past week, on October 5, the Catholic Church celebrated the feast day of St. Faustina. A young woman who lived around 100 years ago, Faustina was entrusted by God with quintessential messages about mercy.

The secretary and apostle of God’s mercy, she became an instrument for articulating His plan for the world, both through her service to people of all kinds as a nun and through her renowned diary excerpts. Though I hadn’t come across the life and service of St. Faustina until I was in college, I have been captivated by her diligence in spreading the word about God’s Divine Mercy. Her words encourage us to trust in God, ask for His mercy based on the sacrifice of His son, and continue her legacy; the fact that our world today is in much need of these messages of Divine Mercy, maybe more than it ever has been, inspires me to further research and spread her story. To begin this task, I’ve been encouraged by the closing prayer of St. Faustina’s Divine Mercy Chaplet, which reads, “Eternal God, in whom mercy is endless and the treasury of compassion inexhaustible, look kindly upon us and increase Your mercy in us, that in difficult moments we might not despair nor become despondent, but with great confidence submit ourselves to Your holy will, which is Love and Mercy itself.”



From Fr. Larry

This week I have been observing the large red maple in my front yard shedding its leaves. Around the campus neighborhood, there are yellow tints to many of the trees, and as the temperatures drop, it's clear that autumn is here. After five years in Austin, Texas, where there's really no winter to speak of, it's refreshing to return to a place with actual seasons. In central Texas, the foliage shifts from dull green to dull brown, with very little display of color. Temperatures almost never dropped below 50°, but when the mercury hit the 60's, folks would break out their furs and puffy coats. Paradoxically these "winter" adaptations were often not accompanied with the resort to long pants, at least among many undergraduates. All of this has me thinking about seasons, and the circular yet progressive flow of time and events. Many of my evangelical friends talk about the "seasons" of life that they're in, which helpfully frames the current moments— good, bad, easy, difficult, whatever— as temporary. They speak of seasons of celebration, seasons of grief, seasons of mellowing out and hunkering down. And of course, seasons of pandemic. For me, this is a season of building: building new relationships, building community, building a renewed campus ministry program, rebuilding the Chaplains' Office. Framing these projects as a season of building helps me remember that everything doesn't— can't— happen at once, and the things that are challenging or frustrating will, in God's times and seasons, be easier next season. In the meantime, it's important to also enjoy the blessings of this moment, this season.

There is an appointed time for everything,
and a time for every affair under the heavens.
a time to give birth, and a time to die;
a time to plant, and a time to uproot the plant.
A time to kill, and a time to heal;
a time to tear down, and a time to build.
A time to weep, and a time to laugh;
a time to mourn, and a time to dance.
A time to scatter stones, and a time to gather them;
a time to embrace, and a time to be far from embraces.
A time to seek, and a time to lose;
a time to keep, and a time to cast away.
A time to rend, and a time to sew;
a time to be silent, and a time to speak.
A time to love, and a time to hate;
a time of war, and a time of peace.
Ecclesiastes 3

Father Larry Rice may be contacted at chaplain@rpi.edu.

CONTACTS

Fr. Larry Rice, CSP
Resident Catholic Chaplain
10 Tom Phelan Place, Troy
chaplain@rpi.edu

Tracy Watson
RPI Associate Catholic Chaplain
spiritual.advisorCCC@gmail.com
(518) 274-7793 ext. 11 or (518) 233-4514

Kevin Krolik
Director of C+CC
krolik2@rpi.edu (518) 274-7793
Office Hours 9am – 5pm

Chaplains' Office:
Mary Holbriter
Office Manager
holbrm@rpi.edu
(518) 276-6518

Parish Trustees:
Mary Crangle Nagy
cranglemary@gmail.com

Barbara Musial
Director of Music
musiab@sage.edu

Tom Reale
realet@gmail.com

Diane Waters
Administrative Asst.
waterd3@rpi.edu
(518) 276-6517