




# THE UNIVERSITY PARISH OF CHRIST SUN OF JUSTICE

2125 Burdett Avenue, Troy, NY 12180  
518-274-7793  
[www.chapelandculturalcenter.net](http://www.chapelandculturalcenter.net)

30 January  
2022:

4th Sunday  
Ordinary Time

Find us on 

## RESIDENT CATHOLIC CHAPLAIN

Fr. Larry Rice, CSP  
518-276-6517  
[chaplain@rpi.edu](mailto:chaplain@rpi.edu)

## PASTOR

Fr. Tom Morrette, Pastor  
Fr. Nathaniel Resila, Parochial Vicar  
518-273-7602  
[ParishOffice@olvols.org](mailto:ParishOffice@olvols.org)

## MASS/LITURGY SCHEDULE

### DAILY MASS

MONDAY – THURSDAY 5 PM

### WEEKEND MASS

SATURDAY VIGIL 5 PM  
SUNDAY 10 AM & 5 PM

### LIVESTREAM

SUNDAY 10 AM Mass livestream at:  
<https://www.facebook.com/ChristSunofJustice/live/>

To view other Diocese livestreams,  
visit: [www.rcda.org/livemass](http://www.rcda.org/livemass)

**CONFESSION** - The Sacrament of Reconciliation is available by appointment with Fr. Larry at [chaplain@rpi.edu](mailto:chaplain@rpi.edu).

## NOTES

**MEMORIAL MASS INTENTIONS** - Please keep in your prayers those enrolled in January: Steven Sohasky, Jean Supernault, and Tom Tilston. They will be remembered at all Masses next weekend.

\*Please see Fr. Larry's Campus Connection section for changes to the Memorial Mass process.\*

Please continue to wear a mask that fully covers your mouth and nose at all times in the C+CC and maintain social distancing. If you are not fully vaccinated you must also fill out a **Health Survey**.

If **INCLEMENT WEATHER** causes Mass to be cancelled, the C+CC phone voicemail message (518-274-7793) will announce the cancellation at least an hour and a half before Mass. Please also check your television for closing announcements. If OLV cancels Mass, we will also cancel Mass.

## EVENTS OF INTEREST

### SATURDAY/SUNDAY, FEB 5-6

Memorial Fund Masses

### WEDNESDAY, FEB 9

10:30-4:30 Red Cross Blood drive at the C+CC.  
*Register here.*

## Rooted in History



Caroline Wales

In 1982, after she had received a Master of Divinity Degree from Yale University, Caroline became the first woman Catholic Chaplain at RPI. While at Rensselaer, she also served as an advisor to Alpha Phi Omega, the service fraternity, and was inducted into the Phalanx Honor Society in recognition of her leadership and service to the campus community. One of her professors at Yale was the renowned Dutch priest and theologian Henri Nouwen. They became good friends and she corresponded with him regularly until his death in 1996. Caroline passed on September 9, 2018.

## MINISTRY OPPORTUNITIES

*Romans 12:6 "In his grace, God has given us different gifts for doing certain things well."*

### WHAT IS A SYNOD AND WHY SHOULD WE

**CARE:** In October, 2021, Pope Francis invited the universal church—all of us—to engage in a synodal process of listening to each other and the Spirit alive in us as People of God living in our contemporary world!

The Albany Diocese is offering a series of Zoom webinars to educate us on what a synod is, its purpose, and opportunities. The sessions are open to all! Register [here](#) for webinars on Feb. 1 and 8.

**CATHOLIC CHARITIES** Drive through food distribution: Feb. 3 at the Lansingburgh Boys/Girls Club, 501 4<sup>th</sup> Ave. Troy. Volunteer and food pick up info [here](#).

### THE RPI STUDENT CHAPTER OF THE KNIGHTS OF COLUMBUS

is seeking a Financial Secretary. This person would be responsible for collecting payments, depositing and withdrawing from the Knights' on-campus bank account, and signing forms such as membership forms. No prior experience with the Knights is needed, however the Financial Secretary must join the council as a member. The time commitment will mostly include attending meetings (schedule TBD), communicating with officers of the council, and making transactions when necessary. If you are interested or know someone that might be, please contact Andy ([bouffa@rpi.edu](mailto:bouffa@rpi.edu)). Thank you!



## You might not know that:

"I got Muhammad Ali's autograph at the airport when I was in high school."

## Favorite CSJ activity:

"The Labor Day Welcome Picnic, with its gathering of families, friends, and students"



Wilson (Bill) Crone

# WE are Church

## A FAMILY PERSPECTIVE by Bud Ozar

Mary and Joseph must have been proud when their village "all spoke well of Jesus and were amazed at his words." But they probably felt shame when the same people drove him out of town. Like Mary and Joseph, the highs and lows of parenting are our path to being a Holy Family.

## COLLECTIONS

Your continued generosity is appreciated!  
Here are ways to give...

- Mail your collection envelope and/or your check **made payable to Christ Sun of Justice** or place in the collection basket.
- Make an **online donation** ("Mass donation" in the comments section.)
- Its not too late to donate to the Annual Paulist Appeal: <http://paulist.org/apa> or by check made out to "Paulist Fathers" and sent to 415 West 59<sup>th</sup> St. New York, NY 10019

## CONTACTS

**Fr. Larry Rice, CSP**  
**Resident Catholic Chaplain**  
10 Tom Phelan Place, Troy  
[chaplain@rpi.edu](mailto:chaplain@rpi.edu)

**Chaplains' Office:**  
**Mary Holbritten**  
Office Manager  
[holbrm@rpi.edu](mailto:holbrm@rpi.edu)  
518-276-6518

**Christine Relyea**  
Interim Admin Asst.  
[crelyea28@gmail.com](mailto:crelyea28@gmail.com)

**Tracy Watson**  
**RPI Associate Catholic Chaplain**  
[spiritual.advisorCCC@gmail.com](mailto:spiritual.advisorCCC@gmail.com)  
518-274-7793 ext. 11 or 518-233-4514

**Parish Trustees:**  
**Mary Crangle Nagy**  
[cranglemary@gmail.com](mailto:cranglemary@gmail.com)

**Tom Reale**  
[realet@gmail.com](mailto:realet@gmail.com)

**Kevin Krolik**  
**Director of C+CC**  
[krolik2@rpi.edu](mailto:krolik2@rpi.edu) 518-274-7793  
Office Hours 9am – 5pm

**Barbara Musial**  
**Director of Music**  
[musiab@sage.edu](mailto:musiab@sage.edu)

## READINGS FOR THE WEEK

Sunday: Jer 1:4-5, 17-19, Ps 71:1-6, 15-17, 1 Cor 12:31—13:13, Lk 4:21-30  
Monday: 2 Sm 15:13-14, 30; 16:5-13, 3:2-7, Mk 5:1-20  
Tuesday: 2 Sm 18:9-10, 14b, 24-25a, 30–19:3, 86:1-6, Mk 5:21-43  
Wednesday: Mal 3:1-4, 24:7-10, Heb 2:14-18, Lk 2:22-40 or 2:22-32  
Thursday: 1 Kgs 2:1-4, 10-12, 1 Chronicles 29:10, 11ab, 11d-12a, 12bcd, Mk 6:7-13  
Friday: Sir 47:2-11, 18:31, 47 and 50, 51, Mk 6:14-29  
Saturday: 1 Kgs 3:4-13, 119:9-14, Mk 6:30-34  
Sunday: Is 6:1-2a, 3-8, Ps 138:1-5, 7-8, 1 Cor 15:1-11, Lk 5:1-11

## C+CC NEWS

The C+CC is looking to hire a Facilities Maintenance Specialist to fill a part-time position involving Building and Grounds Maintenance and Event Support. We are looking for someone to assist with regular cleaning, seasonal work, and setting up for and cleaning after events. Please contact C+CC Director, Kevin – [krolik2@rpi.edu](mailto:krolik2@rpi.edu) if you're interested.



## ~Campus Connection~



### SPIRITUAL SEEDS

by Tracy Watson, RPI Associate Catholic Chaplain

[spiritual.advisorCCC@gmail.com](mailto:spiritual.advisorCCC@gmail.com)

01/28/22

Greetings to you!

In our first Tuesday Evening Bible Study of this brand new Spring semester, one of our topics of discussion was “Sabbath”, the refreshment that spiritual retreat can bring, and the role of silence and rest. This

poem~prayer seems to capture the essence of our conversation:

*Slow me down, Lord.*

*Ease the pounding of my heart by the quieting of my mind.*

*Steady my hurried pace with a vision of the eternal reach of time.*

*Give me, amid the confusion of this day, the calmness of the everlasting hills.*

*Break the tensions of my nerves and muscles with the soothing music of the singing streams that live in my memory. Help me to know the magical restoring power of sleep.*

*Teach me the art of taking minute vacations -- of slowing down to look at a flower, to chat with a friend, to pat a dog, to read a few lines from a good book. Remind me each day of the fable of the hare and tortoise, that I may know that the race is not always to the swift -- there is more to life than increasing its speed.*

*Let me look upward into the branches of the towering oak and know that it grew great and strong because it grew slowly and well.*

*Slow me down, Lord, and inspire me to send my roots deep into the soil of life's enduring values, that I may grow toward the start of my greater destiny.*

~ Amen

(author unknown)



### COLLEGE KNIGHTS OF COLUMBUS COUNCIL #13635

by Andy Bouffard [bouffa@rpi.edu](mailto:bouffa@rpi.edu)

By Patrick E. Kelly, Supreme Knight

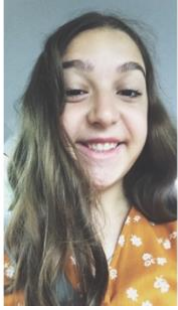
“Flowing from the Year of St. Joseph declared by Pope Francis, and inspired by his apostolic letter *Patris Corde*, comes our Pilgrim Icon Program in honor of St. Joseph [2021-2023].”

St. Joseph carried out his mission of raising, guarding and preparing Christ quietly, courageously and faithfully. For that faithful work, St. Joseph was rewarded — not with seeing the fruits of his labor in this life, but with the incomparable prize of glory in heaven.

This beautiful icon is housed at St. Joseph’s Oratory in Montréal, Canada’s preeminent Shrine to St. Joseph, founded by St. André Bessette. The original is written (prayerfully painted) by Elizabeth Bergeron [SJSH] from a drawing by famed iconographer Alexandre Sobolev. In the image, St. Joseph stands with his eyes cast humbly down, but with a determined strength in his face. In his covered arm he bears the Child Jesus, whose own hand is raised, blessing the world. In his right arm, St. Joseph holds a flowering staff, a sign that he was chosen by God. The white lilies of the staff signify his purity and chastity.

Taken together, the icon provides a window into the life and mission of this courageous father, a man who was one of us and yet called to a mission of incomparable significance. Our world desperately needs men and women of courage. But in a particular way, it needs courageous fathers — men willing to stand up and to carry out their own mission of protecting, defending and raising future generations. It needs men willing to risk it all, in order to offer the world Jesus. In short, our world needs men in the model of St. Joseph.” St. Joseph, pray for us.





## NEWMAN CATHOLIC FELLOWSHIP

by **Megan Adam** *adamm2@rpi.edu*

The first reading which we're presented with this weekend from the book of Jeremiah reminds us of the loving omnipotence of our God, and what this means for us as His followers. I've always been struck by the initial verses, which state, "Before I formed you in the womb I knew you, before you were born I dedicated you, a prophet to the nations I appointed you. (Jer. 1: 4-5). Though in this book God was speaking to a prophet with a distinctive mission to preach His name to an exiled people, God's message is still perfectly relevant to us in the 21st century. Through whatever the Lord calls us to do with our lives, we can approach these personal duties firmly and with confidence, "for [He] is with [us] to deliver [us]" (1:19). A song which beautifully articulates this reminder from Jeremiah's book is that of contemporary Christian artist Tauren Wells, in his song "Known." Truly a soulful masterpiece, the refrain of the song reads: "I'm fully known and loved by You / You won't let go no matter what I do / And it's not one or the other / It's hard truth / and ridiculous grace / To be known fully known and loved by You / I'm fully known and loved by You.



## FR. LARRY RICE, CSP

It has been a centuries-old tradition in the Catholic Church to offer Masses for our deceased loved ones. The bonds of love and affection that we forge in life do not cease at death, and we believe that we can assist each other with our prayers, even beyond our earthly life. So it is a great comfort to those who are grieving to have a Mass offered for someone who has recently died, or on the anniversary of death.

It is customary to make a donation to the priest or parish when requesting a memorial Mass. Because I am a member of a religious order, I don't receive those Mass stipends directly; they go to the parish, or in some cases to the Paulist Fathers. It's important to remember that one doesn't "buy" a Mass; sacraments are never for sale (a forbidden practice known as simony). The customary donation for a memorial Mass is around \$20, but we will never refuse to offer a memorial Mass if money is a problem.

When the Church's Code of Canon Law was revised in 1983, the practice of grouping memorial Masses together was prohibited. In 1991, the law was amended to permit such groupings, provided certain conditions were met. Our parish practice of grouping memorial Masses together (the "Memorial Fund") was initiated to deal with a large number of memorial requests, but we were not observing all the conditions of that permission. Because the number of requests we receive today can adequately be met by our regularly scheduled Masses, we will be moving to a more conventional way of handling these memorial requests.

So, to request a memorial Mass, contact Kevin Krolik at the Chapel + Cultural Center. He will consult the Mass calendar in the sacristy, to see what dates are available, and will write the Mass intention into the calendar. If you are offering a check for the Mass donation, it should be made out to "Christ Sun of Justice Parish." Before each Mass, I— or whoever is presiding— will consult the calendar to see who the Mass is being offered for. We won't ordinarily announce who the Mass is for unless there is a particular reason to do so; the Mass intentions will be printed in the Sunday Bulletin. Kevin will have Mass cards available in the office. If you need to arrange a Mass intention on a weekend when Kevin isn't around, see me 15 minutes before Mass starts, or after Mass, and I can help you.

On the first Sunday of February we will offer the 10:00 AM Mass for the "enrolled" people from January. Going forward we will offer individual Masses for individual intention. This process will be more in line with people's expectations of memorial Masses and will be more in keeping with normal parish practices. If you have any questions about any of this, please contact me.

Father Larry Rice may be contacted at *chaplain@rpi.edu*.