




THE UNIVERSITY PARISH OF CHRIST SUN OF JUSTICE

2125 Burdett Avenue, Troy, NY 12180
518-274-7793
www.chapelandculturalcenter.net

27 February
2022:

8th Sunday
Ordinary Time

Find us on 

RESIDENT CATHOLIC CHAPLAIN

Fr. Larry Rice, CSP
518-276-6517
chaplain@rpi.edu

PASTOR

Fr. Tom Morrette, Pastor
Fr. Nathaniel Resila, Parochial Vicar
518-273-7602
ParishOffice@olvols.org

MASS/LITURGY SCHEDULE

DAILY MASS

MONDAY – THURSDAY 5 PM

WEEKEND MASS

SATURDAY VIGIL 5 PM
SUNDAY 10 AM & 5 PM

LIVESTREAM

SUNDAY 10 AM Mass livestream at:
<https://www.facebook.com/ChristSunofJustice/live/>

To view other Diocese livestreams,
visit: www.rcda.org/livemass

CONFESSION - The Sacrament of Reconciliation is available by appointment with Fr. Larry at chaplain@rpi.edu.

MINISTRY OPPORTUNITIES

Romans 12:6 "In his grace, God has given us different gifts for doing certain things well."

PERSONAL CARE PRODUCTS - The OLS Food Pantry was overwhelmed by the generosity of our parish donation of personal care products that filled an entire car! They wish to pass along their thanks and gratitude to all who participated! They are able serve 10-16 families each week due to our generous giving.

During the month of May we will be collecting items for the Catholic Charities Personal Care Closet.

SYNOD LISTENING SESSIONS organized by the Diocese of Albany begin Mar. 9 in Loudonville. See [this site](#) for info and [here](#) for a list of sessions.

EVENTS OF INTEREST

SUNDAY FEB 27

You are invited to attend the next Zoom meeting of Women of Christ Sun of Justice Church at 8 pm. The topic of our meeting will be "Inclusivity." We hope you can join us! [Zoom link](#)

WEDNESDAY MARCH 2

Ash Wednesday Masses at 12:10, 5 and 7PM

THURSDAY MARCH 3

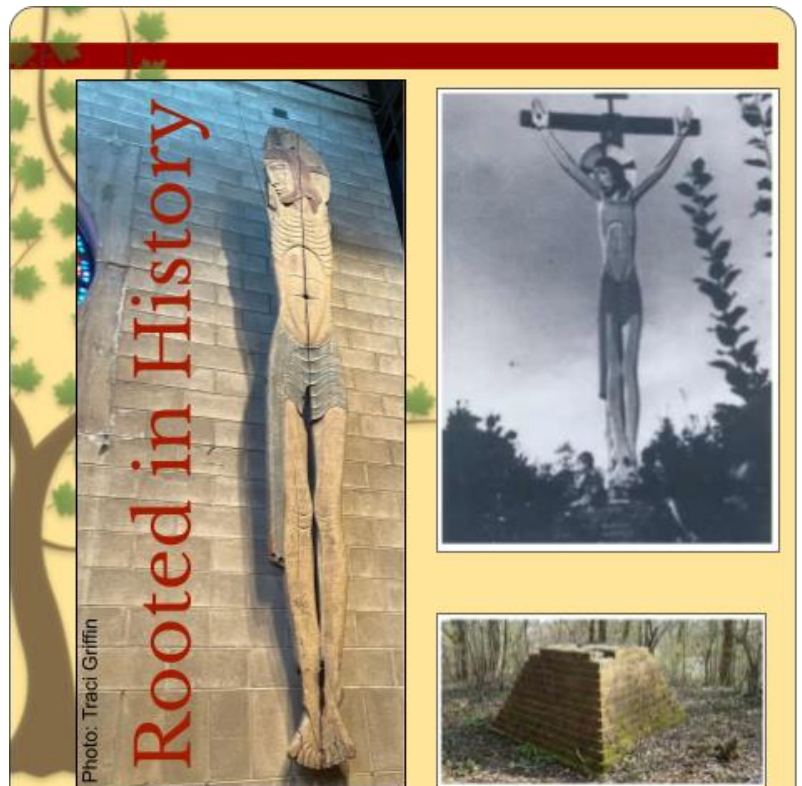
9:30-3:30 Red Cross Blood drive at the C+CC. [Register here.](#)

WEDNESDAY MARCH 9

Meatless Potluck Meal following the 5:30 Mass. If you can contribute a dish to the potluck meal, please indicate that on the sign-up sheet in the C+CC hallway for planning purposes. Thank you.

Lenten speaker at 7PM: *Fr. Ricky Manalo, CSP*

"Religion, Media and Technology: What have we learned after two years of virtual church?"



Rooted in History

Photo: Traci Griffin

The Spoil Bank Crucifix was designed by the famous sculptor, Eric Gill and carved by his assistant, Joseph Cribb. The crucifix was erected in Ditchling Common (south of London, England) in Nov. 1922 on the "Spoil Bank" (a mound of soil resulting from the creation of a railroad line). Gill intended it to commemorate the fallen of the First World War and to reflect his distaste of his experience during his short time in the Royal Air Force in 1918.

The crucifix was 26' tall and overlooked the railroad until it was taken down in 1940 to stop it from being used as a marker to identify the railroad tracks for enemy attacks on London. It was stored in the nearby workshop of the Guilds of St Joseph and St. Dominic. The arms and the upper horizontal section of the cross were lost or burned. In 1955 the remaining 15' section was acquired from the Guilds by the Rensselaer Newman Foundation and has since been displayed in the C+CC.

Photos & info: Ditchling Parish Council Issue 5, 2018

NOTES

THANK YOU to Paul Macari, Esquire for his help in both preparing and filing the articles of incorporation for the parish. He refused a fee for his services and also paid the filing fee as a donation to the parish. We are most grateful to him.

MASKS must continue to be worn and social distance maintained at the C+CC given the current guidelines in place at RPI and by the CDC. If you are not fully vaccinated you must also fill out a **Health Survey**.

UKRAINIAN EASTER EGG WORKSHOP (i.e. *Pysanky*) – As part of your Lenten preparation, learn about and how to make these special ancient symbols of Easter. Christine Relyea will lead the workshop on Saturday, March 12 from 9- 2:00 at the C+CC. You need only bring yourselves to the program. Lunch will be available along with beverages throughout the day. To cover expenses, we request a \$20 donation (free for RPI students). Enrollment is limited so please register asap: email Christine at crelyea28@gmail.com or call or text: 724-316-6664.

If **INCLEMENT WEATHER** causes Mass to be cancelled, the C+CC phone voicemail message (518-274-7793) will announce the cancellation at least an hour and a half before Mass. Please also check your television for closing announcements. If OLV cancels Mass, we will also cancel Mass.

COLLECTIONS

Your continued generosity is appreciated! Here are ways to give...

- Mail your collection envelope and/or your check **made payable to Christ Sun of Justice** or place in the collection basket.
- Make an **online donation** (“Mass donation” in the comments section.)
- Next weekend (MAR 5/6) is the Black, Native American & Latin American Mission Collection. Please make **checks payable to Christ Sun of Justice with “Diocesan Collection” on the memo line** of your check.

CONTACTS

Fr. Larry Rice, CSP
Resident Catholic Chaplain
10 Tom Phelan Place, Troy
chaplain@rpi.edu

Chaplains' Office:
Mary Holbriiter
Office Manager
holbrm@rpi.edu
518-276-6518

Christine Relyea
Interim Admin Asst.
crelyea28@gmail.com

Tracy Watson
RPI Associate Catholic Chaplain
spiritual.advisorCCC@gmail.com
518-274-7793 ext. 11 or 518-233-4514

Parish Trustees:
Mary Crangle Nagy
cranglemary@gmail.com

Tom Reale
realet@gmail.com

Kevin Krolik
Director of C+CC
krolik2@rpi.edu 518-274-7793
Office Hours 9am – 5pm

Barbara Musial
Director of Music
musiab@sage.edu

MASS INTENTIONS

SUNDAY FEB 27 10AM MASS – in memory of: Michael J. Dziejwski by Dee & Dave Dziejwski

READINGS FOR THE WEEK

Sunday: Sir 27:4-7, Ps 92:2-3, 13-16, 1 Cor 15:54-58, Lk 6:39-45

Monday: 1 Pt 1:3-9, 111:1-2, 5-6, 9 and 10c, Mk 10:17-27

Tuesday: 1 Pt 1:10-16, 98:1, 2-4, Mk 10:28-31

Wednesday: Jl 2:12-18, 51:3-4, 5-6ab, 12-13, 14 and 17, 2 Cor 5:20–6:2, Mt 6:1-6, 16-18

Thursday: Dt 30:15-20, 1:1-2, 3, 4 and 6, Lk 9:22-25

Friday: Is 58:1-9a, 51:3-4, 5-6ab, 18-19, Mt 9:14-15

Saturday: Is 58:9b-14, 86:1-2, 3-4, 5-6, Lk 5:27-32

Sunday: Dt 26:4-10, Ps 91:1-2, 10-11, 12-13, 14-15., Rom 10:8-13, Mt 4:4b, Lk 4:1-13

A FAMILY PERSPECTIVE by Bud Ozar

Today Jesus tells us: “Why do you see the speck in someone else’s eye but miss the log in your own eye?” It’s always easier to try to change someone else than face the things in ourselves that need change. What a waste of time, for we can’t change anyone but ourselves.

C+CC NEWS

LENTEN SPEAKER SERIES

5:30 PM Mass / Potluck Dinner / 7 PM Speaker
(livestreaming will be available)

MAR 9 *Fr. Ricky Manalo, CSP*

MAR 16 *Br. Mickey McGrath, OSFS*

MAR 23 *Nora Bradbury-Haehl*

MAR 30 Communal Penance Service

APR 6 *Fr. Ron Franco, C.S.P.*

CALL FOR ARTISTS

The C+CC has an open call for artists to present their works on display at the C+CC Gallery. All forms of Art: Painting, Sculpture, Mixed Media, and Photography are considered. The booking process is arranged by contacting Kevin at the C+CC Office 518-274-7793 or by email: krolik2@rpi.edu. Exhibits are booked in two-month intervals and we are looking to fill the Fall 2022 and Spring 2023 schedule.



~Campus Connection~



SPIRITUAL SEEDS

by Tracy Watson, RPI Associate Catholic Chaplain

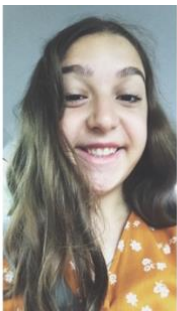
spiritual.advisorCCC@gmail.com

02/25/22

Ringling doorbells

"...It is not enough to simply open the [parish] door in welcome because they come, but we must go out through that door to seek and meet the people!"

These words of Pope Francis from a July 2013 homily serve as the bell-ringer for suggestion #49 in Joe Paprocki's book *A Church On The Move: 52 Ways to Get Mission and Mercy in Motion* (Loyola Press, 2016 p241). Consider the title of suggestion #49: **"From Waiting for the Doorbell to Ring, to Ringing Doorbells"**. What might that provocative invitation mean for our University Parish, Christ Sun of Justice especially as we as a parish faith community lean in to Christ's call for us? Could it be that we are being called out of doors to the spaces and places that our neighbors, non-Catholic and Catholic alike, inhabit so as to listen to how we can be Church here and now? Might this be a hugely important part of a meaningful and transformative component of the Synodal process? Might this be a ministry that **you** are being called to be a part of? Stay tuned...



NEWMAN CATHOLIC FELLOWSHIP

by Megan Adam *adamm2@rpi.edu*

During a particularly busy week leading up to a major midterm, I found myself renewed in the words of one of my favorite songs, "Keep Me in the Moment" by Christian artist Jeremy Camp. In the song, Camp offers a prayer to God, asking Him to help us to live each day with attentive eyes and willing hearts to see Him at work. His words remind us that when we keep our sights on God, we are more apt to understand His plan for us. When life gets busy and hectic, it certainly can be easy to get lost in the everyday motions. However, each day has its own opportunities for us to live in our calling and make God known; "Nothing is wasted when everything's placed in [His] hands." This week, I'd encourage us to reflect and pray on these lyrics by Jeremy Camp: "Oh Lord keep me in the moment / Help me live with my eyes wide open / 'Cause I don't wanna miss what You have for me / Singing, oh Lord show me what matters / Throw away what I'm chasing after, 'cause I don't wanna miss what You have for me." Upcoming: Newman Club will be collaborating with RCA, MSA, and Hillel on RPI's campus to host an interfaith panel and Q & A session, as well as a barbeque towards the end of March and early April. Stay tuned to the bulletin for more announcements and updates!



COLLEGE KNIGHTS OF COLUMBUS COUNCIL #13635

by Andy Bouffard *bouffa@rpi.edu*

By Patrick E. Kelly, Supreme Knight

"Flowing from the Year of St. Joseph declared by Pope Francis, and inspired by his apostolic letter *Patris Corde*, comes our Pilgrim Icon Program in honor of St. Joseph [2021-2023]."

St. Joseph carried out his mission of raising, guarding and preparing Christ quietly, courageously and faithfully. For that faithful work, St. Joseph was rewarded — not with seeing the fruits of his labor in this life, but with the incomparable prize of glory in heaven.

This beautiful icon is housed at St. Joseph's Oratory in Montréal, Canada's preeminent Shrine to St. Joseph, founded by St. André Bessette. The original is written (prayerfully painted) by Elizabeth Bergeron [SJSH] from a drawing by famed iconographer Alexandre Sobolev. In the image, St. Joseph stands with his eyes cast humbly down, but with a determined strength in his face. In his covered arm he bears the Child Jesus, whose own hand is raised, blessing the world. In his right arm, St. Joseph holds a flowering staff, a sign that he was chosen by God. The white lilies of the staff signify his purity and chastity.

Taken together, the icon provides a window into the life and mission of this courageous father, a man who was one of us and yet called to a mission of incomparable significance. Our world desperately needs men and women of courage. But in a particular way, it needs courageous fathers — men willing to stand up and to carry out their own mission of protecting, defending and raising future generations. It needs men willing to risk it all, in order to offer the world Jesus. In short, our world needs men in the model of St. Joseph." St. Joseph, pray for us.

FR. LARRY RICE, CSP



Ash Wednesday is this week! As we enter into a season of preparation for Easter, the world is looking very different from just a week ago.

It's hard to believe that this is our third Lent during the COVID-19 pandemic. We're still struggling to find our way in a world roiled by disease, economic disruption, ever-changing public health advice, and the continuing possibility of further viral variants with effects we can't possibly predict.

In the midst of this chaos, Russia has initiated a military action in Ukraine-- the first armed conflict on the European continent since World War II.

And in the background is the clearly growing threat of global climate change, whose long-term effects will change the configuration of human civilization as the seas rise, weather patterns become more extreme, and large swaths of land become unarable and uninhabitable.

We seem unable to deal with any one of these crises, let alone the whole terrifying constellation. Our legislatures are locked into a permanent partisan stand-off where collaboration is impossible, and the only goal is the defeat of the other party. We've succumbed to a culture of narcissism where there is no concept of a common good; everyone has rights and no one has responsibilities.

What to do? My friends in various 12-step recovery programs would tell you that when your life has become unmanageable-- when you're surrounded by chaos-- the way out of constant crises is through community, accountability, and a Higher Power. Which brings us back to Lent 2022.

Instead of the common "giving-things-up" for Lent, perhaps we'd be better off returning to the core pillars of the season: prayer, fasting, and almsgiving. Prayer allows us to cry out to God with our needs, to seek his mercy, and to intercede for the most suffering people in our world. Fasting asks us to live in solidarity with the poor and marginalized for a few hours, restoring our fatigued compassion and renewing our bodily connections to the people and systems that keep us fed and satisfied. Almsgiving is a way of living out God's mercy, and expressing our gratitude for all the resources that have been entrusted to us.

At his general audience on Feb. 23, the Pope Francis called on believers and nonbelievers to combat the "diabolical insistence, the diabolical senselessness of violence" with prayer and fasting. He said, "I invite everyone to make March 2, Ash Wednesday, a day of fasting for peace. I encourage believers in a special way to devote themselves intensely to prayer and fasting on that day. May the Queen of Peace protect the world from the folly of war."

Ash Wednesday is a day of fasting and abstinence from meat for Catholics. This year, as we begin the Season of Lent, let's focus on our personal conversion, and on intercession for the poor, the suffering, and the marginalized people of our world.

Father Larry Rice may be contacted at chaplain@rpi.edu.